



EVALUATION OF THE PATHOMORPHOLOGY OF REGENERATION IN DIABETIC FOOT SYNDROME AND DETERMINATION OF ITS DEPENDENCE ON BIOCHEMICAL PROCESSES

Ergashev U.Y.

Tashkent Medical Academy, General surgery department №2., Tashkent, Uzbekistan

Ernazarov Kh.I.

Tashkent Medical Academy, General surgery department №2., Tashkent, Uzbekistan

ernazarovxojimurod9@gmail.com

Abdusalomov B.A.

Tashkent Medical Academy, General surgery department №2., Tashkent, Uzbekistan

Minavarkhojayev R.R.

Tashkent Medical Academy, General surgery department №2., Tashkent, Uzbekistan

ravshanminavarkhojayev@gmail.com

Ortiqboyev F.D.

Tashkent Medical Academy, General surgery department №2., Tashkent, Uzbekistan

Malikov N.M.

Tashkent Medical Academy, General surgery department №2., Tashkent, Uzbekistan

Article history:

Received: December 8th 2022
Accepted: January 8th 2023
Published: February 10th 2023

Abstract:

The aim of the study was to learn of the effect of the new drug "Reomannisol" on wound healing, taking into account pathomorphological aspects in the complex treatment of experimental diabetic foot syndrome.

Material and methods. An experimental study was carried out on 140 outbred male rats weighing 220-250 g, kept in the TMA vivarium. The experimental animals were divided into 4 groups: the 1st group was intact; 2nd group – the creation of an experimental model of alloxan diabetes mellitus; 3rd control group - against the background of alloxan diabetes, the creation of an experimental model of a diabetic foot using traditional complex treatment; 4th experimental group - on an experimental model of diabetic foot - traditional treatment and reomannisol. On the skin of each rat's right hind paw's footpad, a full-thickness rectangular wound measuring 2 mm×5 mm was created with a scalpel. Every day, the wounds were treated with the traditional method of treatment (5% alcohol solution of iodine and levomekol ointment) until the end of the experiment, for the experimental group, the local traditional method of treatment and intraperitoneal administration of the new Reomannisol preparation were used 1 time per day at a dose of 1 ml of Reomannisol per 100 g of animal body weight for 5 days.

Results. By the 10th day in the experimental group, an independent almost complete closure of the wound defect and hair growth around the wound was noted. In the control group, on the 10th day, a wound defect of about 4.9 ± 0.05 mm² remained, the wound healed on the 14th day of the experiment.

Conclusion: The use of local treatment and reomannisol can enhance angiogenesis in the early stages of the experiment and restore disturbed microcirculation, increase macrophage response, fibroblast proliferation, maturation and remodeling of granulation tissue and its epithelization, reduce the inflammatory reaction, which leads to more effective and early healing of the wound area.

Keywords: experimental model of diabetic foot, experimental animals, diabetes mellitus, alloxan, surgical debridement, reomannisol.

INTRODUCTION. Currently, one of the leading places in terms of growth rates of morbidity, disability, and mortality was occupied by diabetes mellitus (DM)

among the so-called "diseases of civilization" [3]. Today, over 460 million people are suffering globally from diabetes; according to the predicted facts



announced by the International Diabetes Federation, by 2040 the number of patients will increase up to 642 million [11].

Diabetes mellitus is accompanied by the development of complications, including diabetic foot syndrome (DFS), one of the leading clinical symptoms of which is the persistence of an ulcer on the skin of the lower extremities [14].

Delayed wound healing is one of the complications of the disease due to multiple factors including poor circulation [13], prolonged inflammation, and hyperglycemia. It is a common cause of morbidity and mortality in patients with DM [18]. When the wound becomes chronic, it is prone to developing foot ulcers, including neuropathy and foot deformities [13]. Foot ulcers in DM are the cause of more than 50% of all non-traumatic leg amputations [22]. Evidence has shown that hyperglycemia is one of the main factors contributing to slow wound healing [18] by increasing cell apoptosis and decreasing cell survival in diabetic wounds. It has been shown to inhibit endothelial cell and fibroblast proliferation in humans [23], up to 75% slower in adult mice with DM compared to control mice [19].

At the present stage in experimental diabetology, the most widespread chemical model of diabetes mellitus uses substances that destroy β -cells of the islets of Langerhans [12, 15]. This study describes a model of diabetes mellitus in rats, induced by the introduction of a reduced dose of alloxan, which significantly reduces the number of animal deaths.

The alloxan model of diabetes mellitus is one of the most widespread and studied. It is actively used by researchers around the world. Alloxan is a structural analog of glucose, due to which it accumulates in pancreatic β -cells and leads to their death, followed by the development of diabetes. At the same time, damage to β -cells is accompanied by degenerative changes in the kidneys and liver, which leads to high mortality in laboratory animals on the first day after alloxan administration. The problem of violations of several types of metabolism with the introduction of alloxan, the prevalence of manifestations of oxidative stress as a typical pathological process in case of damage to the key organ involved in all types of metabolic processes (liver) dictate the need to prescribe pathogenetic drugs from the group of metabolic correctors with hepatoprotective and antioxidant orientation. One of the promising new drugs in this area is Rheomannisol (LLC "REKA-MED FARM" Republic of Uzbekistan) - a complex drug with antihypoxic, antioxidant, rheological, anti-shock, detoxifying, diuretic action. The main pharmacologically active substances are sodium succinate and mannitol.

AIM OF THE STUDY. Study of the effect of the new drug "Rheomannisol" on endogenous intoxication and wound healing, taking morphological aspects into the complex treatment of experimental diabetic foot syndrome.

MATERIALS AND RESEARCH METHODS. The work was done on experimental material. Healthy rats were selected for the experiment. Experimental studies were carried out on 140 outbred male rats weighing 220-250 g, kept in the Tashkent Medical Academy (TMA) vivarium. The rats were kept under optimal conditions, all rats lived in a room with a 12-hour light-dark cycle and a constant temperature of 22-25°C, with free access to water. All rats were given a sufficient amount of a normal rodent diet ad libitum. (diet for rodents, State standard No. GOST R50258-92) and tap water daily. Operations and all manipulations with animals were carried out using general anesthesia, in compliance with the principles of humanity outlined in the directives of the European Community (86/609/EEC) and the Declaration of Helsinki, by the "Rules for working with experimental animals". The experimental animals were divided into 4 groups: the 1st group was intact; 2nd group - the creation of an experimental model of alloxan diabetes mellitus; 3rd control group - against the background of alloxan diabetes, the creation of an experimental model of a diabetic foot using traditional complex treatment; 4th experimental group - on an experimental model of diabetic foot - traditional treatment and reomannisol.

After a 24-hour fast, the rats were weighed. A 2% solution of alloxan diluted in 0.9% saline was administered intraperitoneally as a single dose, corresponding to a dose of 20, 15, 12 mg of alloxan per 100 g of animal weight. Food and water were given to animals only 30 minutes after drug administration. On the 3rd day, the level of glucose in the blood was assessed.

Determination of glucose concentration in the peripheral blood of animals. Diabetes was confirmed 3 days after the blood glucose concentration was determined. Peripheral blood glucose concentration was measured with an "AccuChek Active" glucometer (Roche Diagnostics, Germany), the linear measurement range was 0.6-33.3 mmol/L. Blood sampling to study the level of glycemia was performed from an incision in the tip of the tail. An experimental model of diabetes mellitus (type I diabetes) has been obtained. The day of verification of diabetes mellitus was considered the zero-day of its development.

Surgical procedure. On the day of verification, the skin surface of the right footpad was shaved and cleaned with a 70% ethanol wipe. On the skin of each rat's right hind paw's footpad, a full-thickness rectangular wound measuring 2 mm × 5 mm was



created with a scalpel [14]. The scalpel and scissor wounds (Day 0) were of similar size and shape with minimal or no bleeding in all groups. Every day, the wounds were treated with the traditional method of treatment (5% alcohol solution of iodine and levomekol ointment), until the end of the experiment, also for the experimental group, in addition to the local traditional method of treatment, a new drug Reomannisol (JV LLC REKA-MED FARM, Republic of Uzbekistan) was used, which was administered intraperitoneally once a day for 5 days, in single doses of the therapeutic range for humans, taking into account differences in relative body surface area [1]. In all cases, the average dose of the studied range was 1 ml of Reomannisol per 100 g of the calculated equivalent mean therapeutic dose (EMTD).

The development of the disease was assessed by the condition of the animals, lethality was recorded in groups, and recorded according to clinical symptoms (polyuria, polydipsia, polyphagia, weight loss, coat) and blood glucose levels. The wool of animals normally has a peculiar luster and is usually adjacent to the skin.

The amount of water drunk by the rats was determined individually by measuring its volume with a measuring cylinder before and after the animals took water. To assess the daily values of diuresis, an individual urine collection was performed using urinals.

Rats were taken out of the experiment by decapitation on days 1, 3, 7, 10, 14, blood was taken for laboratory examinations: biochemical analyzes (total protein, ALT, AST, glucose, creatinine, urea), products of lipid peroxidation (LPO) (malondialdehyde - MDA), indicators endogenous intoxication (MWM, SCE), morphological studies of tissues taken from the wound zone and the surrounding intact area were carried out. At each time, sampling for analysis was carried out in 10 animals of each group.

Biochemical analyzes (the activity of aspartate aminotransferase (AST), alanineaminotransferase (ALT), total protein, glucose, creatinine, urea) were measured on a biochemical analyzer photometer Mindray BA-88A (Mindray, China), using a set of chemical reagents manufactured by Human (Germany).

Determination of malondialdehyde (MDA) using thiobarbituric acid. At high temperatures in an acidic medium, MDA reacts with 2-thiobarbituric acid, forming a colored trimethylene complex, with an absorption maximum at 532 nm on an SF-46 spectrophotometer (Russia). The molar coefficient was used - $1.56 \times 10^5 \text{ cm}^{-1} \times \text{M}^{-1}$. The MDA level was expressed in $\mu\text{mol/L}$ [9].

A biochemical method for determining endogenous intoxication, which consists in choosing the level of medium-weight molecules in the blood

serum. Medium weight molecules (MWM) are an integral biochemical marker of endogenous intoxication (EI). In the blood plasma of all subjects, the level of MWM was assessed. For this, a screening method for determining molecules was used, this method includes taking blood, separating serum from blood cells by centrifugation, obtaining a protein-free sample by adding 0.5 ml of 10% trichloroacetic acid to 1 ml of blood serum, and centrifuging for 30 minutes at 3000 rpm in min. Next, 4.5 ml of distilled water is added to 0.5 ml of the supernatant and the optical density of the sample is determined on a spectrophotometer with a wave characteristic of 254 nm. The content of molecules of average mass is determined by the size of the optical sample, and the presence of endogenous intoxication is judged by their high degree. Measurement of the level of MWM and oligopeptides allows you to calculate the Integral index of intoxication. To calculate the optical density in the ultraviolet region of the spectrum, a UNICO 2800 spectrophotometer (USA) was used [2].

Determination of the concentration of oligopeptides (OP). The method for determining the content of OP according to Lowry (1956) was used. To do this, 1 ml of a weakly acidic supernatant diluted 10 times with distilled water was taken, 2 ml of an alkali-copper reagent was added, and left for 10 min. at room temperature, then 0.2 ml of the Folin-Ciocalteu reagent was added, stirred, and after 30-40 minutes. the optical density was measured at 750 nm in a cell with a length of 5 mm on a UNICO 2800 spectrophotometer (USA) [20].

The sorption capacity of erythrocytes (SCE) was determined by a method based on the idea of an erythrocyte as a universal adsorbent [10]. To do this, 1 ml of erythrocyte suspension was transferred into a test tube with 3 ml of 0.025% methylene blue in physiological saline. After a 10-minute incubation at room temperature, the sample was centrifuged for 10 minutes. at 3,000 rpm the optical density of the supernatant and the initial solution of methylene blue was determined concerning physiological saline at a wavelength of 630 nm using a UNICO 2800 spectrophotometer (USA). The amount of absorbed dye was expressed as a percentage [10].

Evaluation of the effectiveness of the drug was carried out based on, also, a visual examination of the animals and their wounds. The criteria for the effectiveness of the drug for the wound were: focusing on the severity and duration of inflammatory manifestations in the wound area (edema, hyperemia, wound exudate), the state of the wound bottom; the appearance of granulation tissue; reduction in the area of the wound defect; the appearance of marginal epithelialization; acceleration of wound healing,



The L.N. Popov test was used to determine the area of the wound. A sterile cellophane plate is placed on the wound and the contour of the wound is applied to it. The drawing is transferred to graph paper and the area of the wound is calculated.

$$\Delta S = \frac{(S_n - S) \cdot 100}{S \cdot t}$$

Where ΔS is the desired value in cm^2 ;

S is the area of the wound in the previous measurement in cm^2 ;

S_n - the size of the area of the wound at the moment in cm^2 ;

t is the number of days between measurements [5].

The research methods described in the classical manuals on histomorphology were applied in the work [18]. Pieces from a diabetic foot, pancreas, and liver were fixed in Carnoy's solution (the composition of the fixative was glacial acetic acid, 10 parts; chloroform, 30 parts; ethyl alcohol, 60 parts). Fixing the pieces for 2-4 hours, then placing the pieces in 96% alcohol. Carrying out the wiring in the usual way and pouring in paraffin. Making histological sections with a thickness of 5-6 microns on a sledge microtome, deparaffinization on a thermostat, and staining with hematoxylin and eosin. It is the most common method of staining histological sections. Paraffin sections are deparaffinized in chloroform and washed in distilled water, then a hematoxylin solution is poured onto the sections for 3 minutes. Rinse in tap water for 10 minutes and the sections are stained with eosin from 0.2 to 3 minutes, depending on the thickness of the sections. They are dehydrated in alcohols of increasing concentration, starting from 70° to 96°, clarified in carbol-xylene, xylene, and placed in a balm. Result: cell nuclei are stained blue-violet, the cytoplasm is pink. The method of luminescent microscopic examination [19].

STATISTICAL ANALYSIS. The data obtained were statistically processed on a Pentium IV personal computer using the Microsoft Excel program. In addition, methods of traditional variational parametric and nonparametric statistics were used. To establish the reliability of the results obtained, the coefficient t - Student test was used. Differences were considered significant if the frequency for the studied trait did not exceed 5% ($P < 0.05$). Statistical processing of digital data was carried out using the SPSS 16.0 and Statistica 6.0 for Windows application programs. Means and standard deviations, medians and interquartile intervals, as well as non-parametric methods (Mann-Whitney, Wilcoxon, Kruskal-Wallis

tests,)) were determined. Analysis of the probability of occurrence of the studied outcome in a certain period (survival) was performed according to the method of E. Kaplan - P. Meier. Cox stepwise regression analysis was used to identify several risk factors for survival. Analysis of the accuracy and practical value of prognostic factors and the validity of the models were measured by the method of concordant (c-statistic) statistics (estimation of the area under the ROC curve).

RESULTS. The body bodyweight before the experiment varied from 220 to 250 g. Group 1 - intact animals (10 rats each), served as controls for groups 3 and 4. 2nd group - the creation of an experimental model of a diabetic foot, against the background of alloxan diabetes; To do this, 10 rats were injected intraperitoneally with 2% alloxan in an amount of 20 mg / 100 g. In this experimental group, in the 2nd experimental group, 8 rats died in the first 3 days as a result of hyperglycemic and hypoglycemic coma, which amounted to 80%. When examining the level of glucose in the blood with a glucometer of the remaining rats, it was 33.3 mmol/l and may have been higher, since the maximum range of the glucometer is 33.3 mmol/l. The remaining 2 rats sat in the corner, there were no reactions to external stimuli, they were sedentary when picked up. The animals did not touch the food. On the next day 4, the remaining rats died.

The second series of the second group of the experimental model of diabetes mellitus was created based on alloxan at a dose of 15 mg per 100 g from 10 rats. In this series of experiments, in the first 3 days the lethality was 50% (5 rats). The glucose levels of the survivors (5 rats) ranged from 29.8 to 33.3 mmol/l. During the next 4 days, the remaining rats died.

3rd series of the experiment of the 2nd group - administration of alloxan intraperitoneally at a dose of 12 mg per 100 g per 100 rats. During the next 72 hours, no lethal outcome was observed in rats, the range of blood glucose levels in rats varied between 15.5 - 17 mmol/L. In rats on the skin of the footpad pad of the right hind paw, a full-thickness rectangular wound measuring 2 mm × 5 mm was created with a scalpel. Rats were randomly divided into 2 groups, each group of 50 rats. So it was created 3 - a control group on 50 rats and 4 experimental groups $n=50$ rats. In both groups, until the end of the experiment (17 days), no death was recorded.

Visual inspection. The first signs of diabetes were manifested in the form of a sharp increase in water consumption of 70-80 ml, polyphagia, polyuria, hyperglycemia. With alloxan-induced diabetes mellitus in animals during the experiment, lethargy, apathy, low activity, tarnishing and loss of coat, weight loss,



clouding of the pupil and sclera, small-point erosion in the tails and limbs were noted. The wool of animals normally has a peculiar luster and is usually adjacent to the skin. In dynamic observation in rats of the experimental group, by the seventh day, the condition began to improve.

In the study of indicators characterizing the state of various organs, for example, indicators of the state of liver cells and the degree of their damage are the activity of AST and ALT enzymes. In our studies, the activity of these enzymes in the blood of animals in both groups was significantly higher than in intact animals (ALT-34U/l±1.ASTAsT-33.4 U/l±1.1), Although, it should be noted that already after three injections of the drug rheomannisol, in the animals of the experimental group, the ALT and AST enzymes recorded low numbers (52.6±1.6; 48.4±1.4, respectively) compared with the control group (82.8±1.4, 86.3±1.5). By the 7th day in the control group ALT-79±0.ASTAsT-79±1.5, which is 1.8 times more

than in the experimental group - ALT-44.7±0.94 AST AST-43, 3±1.0. In our study, in animals, the degree of elevation of the levels of enzymes alanine transferase and aspartate transferase indicates a pronounced violation of the cellular structure of the liver. Recorded activation of transaminases may indicate a violation of the integrity of hepatocyte membranes, leading to an increase in their permeability, and subsequently to the death of liver cells. A decrease in the activities of both enzymes (ALT, AST) followed the injections of rheomannisol in the experimental gr, out and on the 10th and 14th days, the numbers (ALT-37.5±0.62, AST-37.1±0.69; ALT-35.3± 0.54, AST-34.9 ± 1.04, respectively) indicate the normalization of the functional capacity of the liver, while in the control group, the activity of ALT and AST enzymes even on days 10, 14 (ALT-75.5 ± 1.1, AST-74.4±1.6; ALT-57.2±1.2, AST-53.4±1.3, respectively) 2 times higher than in the experimental one, and remain at a high level until the end of the experiment (Table 1).

Table 1. Biochemical parameters of animal blood in an experimental model of diabetic foot.

Indexes Group of animals	Glucose, mmol/l	ALT, U/l	AST, U/l	Urea, mmol/l	Creatinine, mkmol/l	Totalprotein, g/l
	day					
Intact	5,8±0,19	34,0±1,0	33,4±1,1	5,1±0,20	61,5±2,0	74,1±1,2
Control	16,6±0,29***	75,1±1,8***	72,7±1,3***	13,8±0,27***	142,6±2,4***	58,4±1,0***
Main	15,2±0,43***^	70,4±1,0***^	66,7±1,1***^	13,5±0,27***	141,0±3,3***	58,8±0,63***
3 days						
Control	15,4±0,28***	82,8±1,4***	86,3±1,5***	15,0±0,40***	145,7±1,8***	55,5±0,73***
Main	12,0±0,31***^^	52,6±1,6***^^	48,4±1,4***^	9,8±0,29***^	97,6±2,1***^	60,1±0,86***^^
7 days						
Control	14,1±0,20***	79,0±0,93***	79,0±1,5***	12,8±0,20***	127,6±1,8***	59,4±0,51***
Main	9,0±0,37***^^	44,7±0,94***^^	43,3±1,0***^	7,2±0,30***^	78,2±2,6***^	66,0±1,4***^^
10 days						
Control	13,8±0,16***	75,5±1,1***	74,4±1,6***	12,2±0,24***	113,2±2,4***	63,3±0,71***
Main	7,3±0,21***^^	37,5±0,62***^	37,1±0,69***^	5,8±0,19***^	68,7±1,2***^	73,5±0,80***^
14 days						
Control	12,9±0,19***	57,2±1,2***	53,4±1,3***	9,7±0,30***	96,7±1,6***	68,3±0,57***
Main	6,5±0,13***^^	35,3±0,54***^	34,9±1,04***^	5,2±0,22***^	63,8±1,3***^	75,8±0,63***^

Note: *- significantly compared with the intact group (*-P<0,05; **-P<0,01; ***-P<0,001)
 ^ - significantly compared with the control group (^-P<0,05; ^^P<0,01; ^^P<0,001)

One of the laboratory signs of the development of renal dysfunction indicates the content of urea and creatinine in the blood plasma, in the first days of the experiments, in rats of the experimental and control groups were almost 2.5 times (without significant

differences between these groups) higher than in the intact group (tables No. 1). After 3-fold intraperitoneal administration of the drug reomannisol, on the 3rd day, the experimental group showed a noticeable decrease in the values of urea (9.81±0.29) and



creatinine (97.6 ± 2.1) by 1.5 times relative to the values control group (urea- 15.0 ± 0.40 ; creatinine- 145.7 ± 1.8). On the 7th day in the groups of rats treated with reomannisol, the levels of urea and serum creatinine (7.2 ± 0.30 and 78.2 ± 2.6 , respectively) were lower compared to control animals (12.8 ± 0.20 and 127.6 ± 1.8 , respectively) by almost 1.7 times. On days 10, 14, urea values and creatinine clearance (urin- 5.8 ± 0.19 ; creat- 68.7 ± 1.2 ; urine- 5.2 ± 0.22 ; creat- 63.8 ± 1.3 respectively) in the experimental group were close to those of the intact group of rats (urea-

5.1 ± 0.20 ; creatinine- 61.5 ± 2.0). However, in the control group, it was accompanied by a higher value of urea and creatinine clearance, and on the 14th day, they were urea- 9.7 ± 0.30 and creatinine- 96.7 ± 1.6 - an average of 1.7 times higher than the values of the experimental group (Table 1).

Evaluated at the end of the study on the background of therapy with the studied preparations of reomannisol, based on the results obtained, we can say about the positive effect of the drug on renal activity, as well as on protein metabolism.

Table 2. The product of POL is malonic dialdehyde (MDA).

Days	Control group, mkmol/l.	Main group, mkmol/l.	Intact group, mkmol/l.
1	$1,39 \pm 0,02^{***}$	$1,35 \pm 0,02^{***}$	$0,87 \pm 0,02$
3	$1,43 \pm 0,02^{***}$	$1,09 \pm 0,01^{***\wedge\wedge}$	-
7	$1,27 \pm 0,01^{***}$	$1,02 \pm 0,01^{***\wedge\wedge}$	-
10	$1,22 \pm 0,01^{***}$	$0,93 \pm 0,01^{\wedge\wedge\wedge}$	-
14	$1,17 \pm 0,01^{***}$	$0,90 \pm 0,02^{\wedge\wedge\wedge}$	-

Note: *- significantly compared with the intact group (*- $P < 0,05$; **- $P < 0,01$; ***- $P < 0,001$)

^ - significantly compared with the control group (^- $P < 0,05$; ^^- $P < 0,01$; ^^^- $P < 0,001$)

Under the conditions of the model we have chosen, the state of the LPO-MDA system was also studied since this system is a key link in the pathogenesis of diabetes mellitus. On the 1st day of the experiment, the content of malondialdehyde was significantly higher in both groups compared to intact rats (0.87 ± 0.02), which indicates the formation of a large amount of lipid peroxidation products, indicating the processes of destruction of cell membranes (Table 2). The effect of daily administration of reomannisol at a dose of 1 ml/100 g (experimental group) on the intensity of lipid peroxidation on the 7th day was expressed by a noticeable decrease in the content of MDA (1.02 ± 0.01) by 1.2 times relative to the control group (1.27 ± 0.01). At the end of the experiment (day 14) in the group receiving traditional treatment, the animals retained a high level of MDA- 1.17 ± 0.01 , indicating a high content of free radicals in the animal body. While in the experimental group there is a stable decline in the level of MDA and on the 10th, 14th day fixes a normal level of MDA (respectively 0.93 ± 0.01 ; 0.90 ± 0.02). This result indicates the antioxidant, detoxifying effect of the drug reomannisol, which is characteristic of it.

MWM isolated from blood plasma and erythrocytes in rats modeled with diabetes mellitus by alloxan can activate LPO processes in the membranes of animal erythrocytes. The state of endointoxication is characterized, as a rule, by the activation of lipid

peroxidation, and they also act as a factor in the aggravation of EI processes [7, 8].

Thus, judging from Table 3, high content of MWM products, which cause the development of endotoxemia, was found in the blood. It was revealed that at the beginning of the experiment, the content of MWM in blood plasma and erythrocytes in animals of both groups was approximately 1.7-2 times higher than in the intact group (see Table 3). It can also be said, reliably given by this table, that the numbers of the toxemia index in plasma and erythrocytes are higher than those in the intact group. The peptide component of MWM is represented by the content of oligopeptides in plasma and erythrocytes in both groups, which also significantly exceeded by 1.6-2.4 times the value in the group of relatively intact animals. This may indicate the activation of pathological proteolysis processes. After the use of reomannisol, the experimental group showed a tendency to reduce all indicators of endogenous intoxication. By the 7th day, the indices of MWM, OP of plasma (pl.) and erythrocytes (eryt.) in the control group were on average 1.2 times higher than those of the experimental group. At 10, 14 days in the experimental - fix the values of indicators corresponding to the intact group and the normalization of the pathological process in the body. Animals that received only traditional treatment, EI indicators remain elevated on average 1.2 times than



in the experimental group, and the state of intoxication persists until the end of the experiment.

Table 3. Dynamics of change in indicators of endogenous intoxication.

	Serum				Erythrocytes			
	Medium weight molecules (MWM) of plasma, Conv. unit	Oligopeptides (OP) of plasma, g/l	Toxic index (TI) of plasma, conv. unit	Intoxication index (II) conv. unit	Medium weight molecules (MWM) of eryt., conv. unit	Oligopeptides (OP) of eryt., g/l	Toxic index (TI) of eryt, conv. unit	SCE, %
Intact group	3,6±0,24	0,45±0,04	1,81±0,20	3,57±0,36	3,5±0,21	0,68±0,04	2,28±0,40	7,8±0,43
Controlgroup Day 1	6,1±0,22* **	0,78±0,06 ***	4,41±0,55 ***	12,04±0,62 ***	7,3±0,25* **	1,16±0,07 ***	7,79±0,62* **	12,8±0,67* **
Maingroup Day 1	6,1±0,17* **	0,77±0,04 ***	4,20±0,21 ***	11,54±0,67 ***	7,0±0,16* **	1,12±0,07 ***	7,44±0,36* **	12,7±0,47* **
Controlgroup Day 3	5,6±0,16* **	0,70±0,05 ***	3,73±0,45 **	10,64±0,46 ***	6,4±0,19* **	1,02±0,06 ***	7,21±0,22* **	11,7±0,35* **
Maingroup Day 4	5,3±0,09* **	0,69±0,05 **	3,36±0,28 ***	8,71±0,99* **	5,9±0,08* **^	0,96±0,06 ***	5,54±0,65* **^	10,4±0,44* **^
Controlgroup Day 7	5,3±0,11* **	0,67±0,05 **	3,09±0,22 ***	8,51±0,35* **	5,6±0,11* **	0,92±0,05 **	5,79±0,32* **	9,6±0,31**
Maingroup Day 7	4,0±0,11 ^^^	0,58±0,02 *	2,15±0,26 ^	5,61±0,62* ^^^	4,1±0,11* ^^^	0,78±0,04 ^	3,46±0,36* ^^^	8,3±0,17^ ^
Controlgroup Day 10	4,9±0,10* **	0,56±0,03 *	2,83±0,23 **	6,84±0,31* **	5,2±0,11* **	0,85±0,05 *	4,64±0,23* **	9,3±0,21**
Maingroup Day 10	3,7±0,14 ^^^	0,48±0,05	1,86±0,22 ^^	3,65±0,24^ ^^	3,7±0,12^ ^^	0,72±0,05 ^	2,43±0,17^ ^^	8,0±0,23^ ^^
Controlgroup Day 14	4,2±0,11* **	0,52±0,03	2,39±0,15 *	5,56±0,24* **	4,2±0,10* *	0,77±0,04	3,30±0,16* **	8,7±0,17* **
Maingroup Day 14	3,5±0,18 ^^	0,45±0,04	1,80±0,23 ^	3,55±0,37^ ^^	3,2±0,17^ ^^	0,68±0,02	2,30±0,22^ ^	7,8±0,43^ ^

Note: *- significantly compared with the intact group (*-P<0,05; **-P<0,01; ***-P<0,001)

^ - significantly compared with the control group (^-P<0,05; ^^ -P<0,01; ^^ -P<0,001).

The study of the sorption capacity of erythrocyte membranes was carried out on erythrocytes from 10 practically healthy rats. The mean SCE in this group was 7.8% ± 0.43. After the administration of alloxan to the body of rats, in both groups on the first days, a regular increase in SCE was observed on average by 1.6 times, intoxication index was 3.3 times that in the intact atop. The redistribution of the toxic load between plasma and blood erythrocytes is a necessary part of the body's natural detoxification [2, 10]. Endotoxins bind to the transmembrane protein of erythrocytes - glycophorin, and in this form are transported to the detoxification organs.

As a result, the use of reomannisol intraperitoneally in rats of the experimental group improved the condition of the animals, reduced the EI of the body. By 10, 14 days in the control group Intoxication index (II) 6.84±0.31; 5.56±0.24 and SCE 9.3±0.21; 8.7 ± 0.17, respectively, were, on average, 1.7 (II) and 1.1 (SCE) higher than the values of the experimental group - II 3.65 ± 0.24; 3.55±0.37 and SCE 8.0±0.23; 7.8±0.43 (see table No. 3). This is due to the fact because the qualities of an antioxidant that improves blood rheology, a detoxifying effect (enterosorbent), and a diuretic, which have the effect of "biochemical sanitation" and restores the

physiological functions of cells for the biotransport of endotoxins.

Wound healing is a big problem for diabetic patients. This problem is observed both on a cellular and humoral basis.

When examining the wound, the following parameters of the course of the wound process were taken into account: the presence and nature of the inflammatory reaction, the presence and nature of the scab, the strength of its adherence to the underlying tissues, the severity of perifocal inflammation, skin hyperemia and tissue infiltration in the wound area, the condition of the edges and bottom of the wound, the timing of wound cleansing from necrotic tissues and the appearance of granulations, the nature of

granulation tissue, the timing of the onset of epithelization of wounds. At 24 hours post-injury in both experimental groups, the size of the wound increased in both groups as the edges of the wounds were stretched further apart due to edema, the edema spread to the entire foot (Figure 1). Also, in both groups on the 2nd day after the formation of a model of a rectangular skin wound, it is observed that the surface of the wound defect was covered with a thin scab formed by wound discharge. When taking the animal in hand, the crust was easily damaged, a transparent exudate leaked out. Pronounced signs of inflammation are noted: the edges of the wound are edematous, hyperemic with areas of necrosis, the bottom of the wound is covered with areas of fibrin.

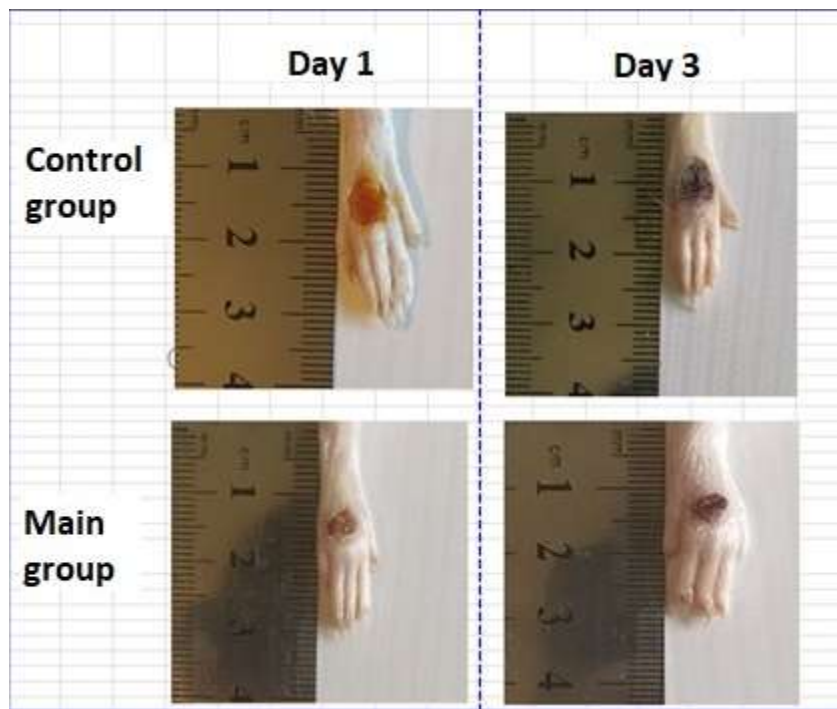


Figure 1. Images of foot wounds on days 1, 3 after injury and comparison of the size (area) of wounds between control and experimental groups.

When analyzing the results of planimetric studies of the speedepithelialization of wound defects, on the 3rd day of the experiment, there were no particular differences in the groups. In both groups, on the 3rd day, wound defects in animals were covered with a dense dark-colored scab, inflammation persisted. When viewed perifocally from the wound, bulging of the skin was determined in both groups. But it should be noted that during the revision of the wound in the control group, the scab was easily

removed from the wound relative to the experimental group, under the scab - the tissue was dull in places, there was a layer of fibrin, there were areas of necrosis. Also, it should be noted that the experimental group showed a decrease in edema and hyperemia of the edges and walls of wounds - it is on the decline, the beginning of the formation of angiogenesis and elements of granulation from the bottom of the wound can be traced, compared with the control group.

Table 4. Comparative results of wound healing in animals with an experimental model of diabetic foot.

Controlgroup				Maingroup				
No	Wound size, mm		Woundarea a mm ²	Popovva lue %	Wound size, mm		Woundarea mm ²	Popovvalue %
1	2,0±0,0 3	5,0±0,0 2	10,1±0,1 6	-	2,0±0,03	5,0±0,02	10,1±0,16	-
3	1,9±0,0 2	4,7±0,0 2	8,6±0,08	5,0±0,2 7	1,7±0,02* **	4,5±0,02* **	7,4±0,05***	8,9±0,46***
7	1,7±0,0 2	4±0,02	6,5±0,07	6,1±0,3 0	1,5±0,02* **	3,0±0,02* **	4,3±0,05***	10,3±0,18***
10	1,6±0,0 2	3,2±0,0 2	4,9±0,05	8,4±0,2 1	-	-	-	-

Note: *- significantly compared with the control group (*-P<0,05; **-P<0,01; ***-P<0,001)

In the experimental group, the scab was difficult to detach, tissues in places with a slight overlay of fibrin. Swelling in the area of the foot wound continued in the rats of the control group on the 7-8th day, but in the rats of the experimental group, it decreased already on the 5th day after the injury. From table 4 it follows that on the 7th day after the injury in rats from the experimental group when using the drug, there was a significant decrease in the area of the wounds ($4.3 \pm 0.05 \text{ mm}^2$) 2 times than its original wound, and 1.5 times than in rats of the control group ($6.5 \pm 0.07 \text{ mm}^2$), due to wound contraction and marginal epithelization (Figure 6). The crust from the wound was removed with great difficulty, under it there was a brightly granulating wound defect with pronounced signs of marginal epithelization, far ahead of the control group. Also, in the rats of the experimental group, almost complete closure of the wound defect is observed, it is noted that the wound is bleeding well, this indicates an improvement in blood circulation in the wound, which exceeds this indicator over the control group. When examining the histological section of the wound under a microscope, there is a limitation and rejection of the destructive-necrotic tissue on the surface of the wound (Figure 3). At the same time, in the circumference of the wound, the tissue of the epidermis is compacted and the focus of destruction of the dermis is delimited from the underlying healthy elements of the tissue of the dermis. As part of the destructive tissue, the development of the process of disintegration and disorganization of both cellular and fibrous structures is determined. In the underlying connective tissue of the dermis, a neoplasm of hair follicles, compaction of fibrous structures and an increase in the proliferative activity of histiocytic cells are determined.

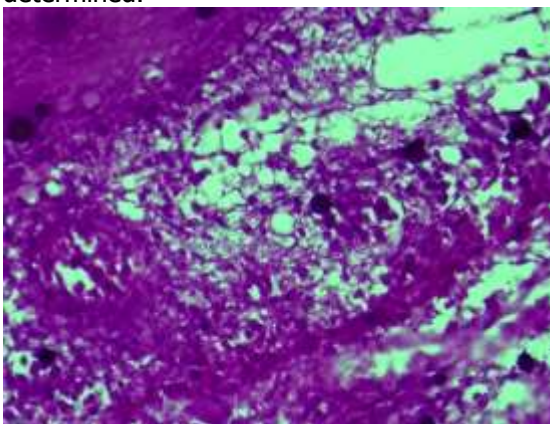


Figure 2. Control group, Day 7. Diabetic wound. Preservation of necrotic mass and inflammatory infiltrate in the bottom of the diabetic foot. Staining: hematoxylin-eosin. Magnification: 10x40.

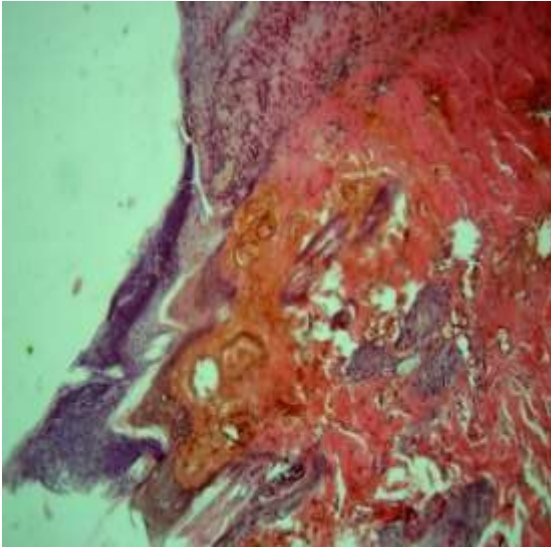


Figure 3. Main group, Day 7. Rejection of necrotic tissue on the surface of a diabetic wound. Staining: hematoxylin-eosin. Magnification: 10x40.

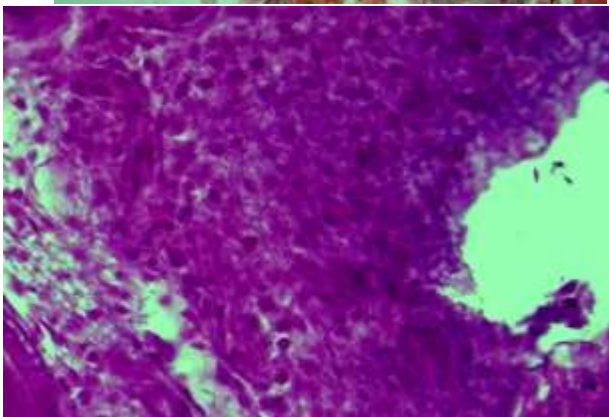


Figure 4. Control group, Day 10. Diabetic wound. Formation of a dense inflammatory infiltrates around the wound of a diabetic foot. Staining: hematoxylin-eosin. Magnification: 10x40.

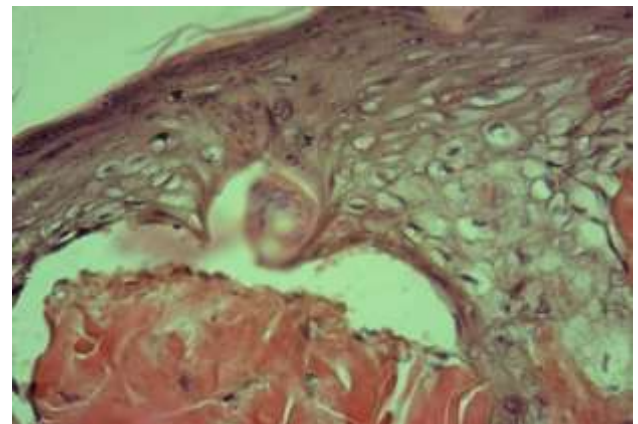


Figure 5. Main group, day 10. Compaction of the surface layers of the epidermis, fibrosis of the connective tissue of the dermis. Staining: hematoxylin-eosin. Magnification: 10x40.

On the 7th day after treatment with the traditional method of an experimental model of a diabetic foot in the control group, at the bottom and circumference of the diabetic wound, necrobiotic tissue and acute inflammatory infiltrate are preserved in the form of a structureless tissue mass, in the circumference of which it is infiltrated with leukocyte cells, and a picture of the formation of poorly differentiated (granulation) is also found. tissue, the

process of vasculogenesis is very weak (Figure 2). As part of the structureless mass, there are foci of edema and tissue vacuolization, as well as hematoxylin conglomerates and calcification. Thus, the development of microangiopathy phenomena took place, which makes it possible to consider diabetic microangiopathy as one of the morphological and functional manifestations of diabetes mellitus.

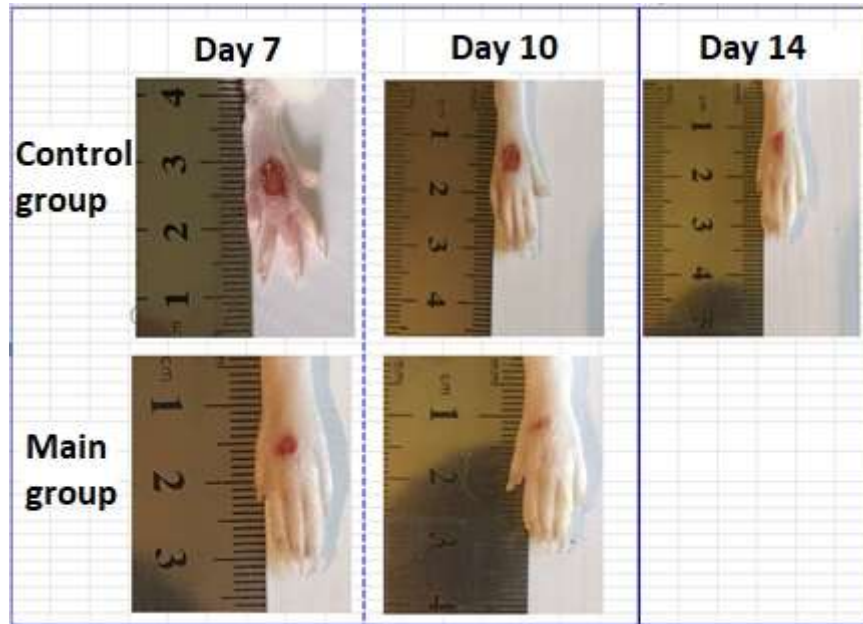


Figure 6. Images of foot wounds on days 7, 10, 14 after injury and comparison of the size (area) of wounds between control and experimental groups

By the 10th day in the experimental group, who received traditional treatment and Reomanisol, an independent almost complete closure of the wound defect and hair growth around the wound were noted (Figure 6). There is a rejection of the necrotic part of the epidermal tissue, dedifferentiation of the remaining part of the stratified epithelium in the form of compaction of the surface layers, vacuolization, and an increase in the proliferative activity of the cells of the basal layers (Figure 5). The connective tissue of the dermis is compacted, without signs of an acute inflammatory process, the fibrous structures are transformed into dense, homogeneous, fibrous masses due to disorganization and fusion with each other. In them, cellular structures are localized along the periphery and around the vessels, and they are in a proliferative active state. On the 10th day after the treatment of diabetic foot with reomannisol, regeneration of the integumentary stratified epithelium is noted in the form of sliding of epithelial cells onto the surface of the wound. At the same time, the epidermis is represented in the regeneration zone by several layers of active and hyperchromicepitheliocytes. Under the epidermis, the formation of a basement membrane from loose fibrous structures is determined. In the tissue of the dermis, the presence of foci of reparative regeneration is determined in the form of excessive formation of fibrous, cellular structures that differ from the surrounding tissue by the presence of many vessels and proliferatively active histiocytic cells. Both in the

epidermis and the dermis, there are no signs of an acute inflammatory process.

In the control group, on the 10th day, a wound defect of about $4.9 \pm 0.05 \text{ mm}^2$ remains (Figure 6). At the bottom and in the circumference of the wound, the formation of inflammatory granulation tissue with foci of necrosis and hemorrhage is noted. The inflammatory infiltrate is represented by proliferatively active lymphoid and histiocytic cells (Figure 4), randomly arranged fibrous structures consisting of argyrophilic and collagen fibers. In the center of the inflammatory infiltrate, a defect surrounded by fibrinoid necrosis and a homogeneous fibrous mass is determined. In the circumference of the inflammatory infiltrate, the connective tissue is subjected to edema, loosening with the breakdown of fibrous structures, and cell necrobiosis. The wound healed on the 14th day of the experiment (Figure 6). Thus, hyperglycemia causes microvascular complications due to impaired angiogenesis, which leads to a prolongation of the inflammatory effect of the wound and the period of wound healing.

The use of standard wound treatments (iodine and levomekol) and the drug reomanisol, indicators of planimetric control ovetroughoutthe wound process in animals of this group (experimental) are at a consistently high level.

CONCLUSIONS.1. The best option for creating an experimental model of a diabetic foot is the introduction of alloxan intraperitoneally in a single



dose of 12 mg per 100 g, in which moderate diabetes develops.

2. After using the drug reomannisol intraperitoneally at a dose of 1 ml / 100 g 1 time per day for 5 days, there was a sharp decline in EI numbers. On the 10th day, the EI values in the experimental group returned to normal, similar to those in the intact group. The drug reomannisol performs "biochemical rehabilitation", due to its inherent qualities: antioxidant, improves blood rheology, detoxification, and diuretic. In rats of the control group, the EI numbers remain at high levels until the end of the experiment.

3. The results of biochemical studies demonstrate positive dynamics in experimental animals with a diabetic foot model when using the drug reomannisol. This was manifested by the fact that by the 10th day there was a decrease and normalization of the level of glucose in the peripheral blood, indicators of renal clearance (urea, creatinine), liver (ALT, AST, albumins).

4. An open, full-thickness wound of the foot, in rats with DM, had low blood circulation, prolonged inflammation, and was characterized by a violation of the inflammatory and proliferative phases of the healing process, which is associated with hyperglycemia. Thus, this model of the open foot in rats provides a good approach for studying the process of wound healing in DM, and this model can be regarded as creating an analog of the human diabetic foot syndrome in an experimental model of alloxan-induced diabetes mellitus.

5. The rate of healing of wound defects in rats with diabetic foot syndrome in the control group falls on the 14th day, since the terms of resorption and rejection of necrotic tissues in the wound are lengthened, damage to the vessels of the microvasculature (microangiopathy), edema is observed for a long time. The wounding process against the background of DM is characterized by the late formation of angiogenesis, slowing down and impaired maturation of granulation tissue, marginal epithelialization. In the experimental group, in rats, along with the local traditional method of wound treatment, the drug reomannisol was used intraperitoneally, as a result, wound healing was recorded on the 10th day from the moment the wound was applied to the foot of the rats. The use of local treatment and reomannisol can enhance angiogenesis in the early stages of the experiment and restore disturbed microcirculation (neoplasms of blood vessels), increase macrophage response, fibroblast proliferation, maturation and remodeling of granulation

tissue and its epithelization, reduce the inflammatory reaction, which leads to more effective and early healing wound area.

6. Comprehensive treatment (application of a local traditional method of treatment on the wound and the drug reomannisol) in an experimental model of the diabetic foot have positive effects on reparative processes and wound healing, due to the formation and enhancement of angiogenesis, as well as on the functional parameters of vital organs by reducing intoxication organism.

ETHICAL APPROVAL. Operations and all manipulations with animals were carried out using general anesthesia, in compliance with the principles of humanity outlined in the directives of the European Community (86/609/EEC) and the Declaration of Helsinki, by the "Rules for working with experimental animals". The ethical approval for the study was granted by Tashkent Medical Academy and the Committee of Ethical Approval for Researches under the Ministry of Health of the Republic of Uzbekistan.

Conflict of interest. The authors declare that they have no competing interests.

Funding. No funding sources to declare.

REFERENCES.

1. Karimov X. Y., Ergashev U. Y., Yakubov D. R. Complex treatment in severe forms of acute paraproctitis //Web of Scientist: International Scientific Research Journal. – 2022. – T. 3. – №. 9. – C. 199-203.
2. Ergashev U. Y. et al. The role of minimally invasive technologies in the treatment of liver cavities //Frontiers in Bioscience-Landmark. – 2021. – T. 8. – C. 82-89.
3. Mustafakulov G. et al. The Approach to Managing the Patients with Idiopathic Thrombocytopenic Purpura: A Case-Control Study //Indian Journal of Forensic Medicine & Toxicology. – 2020. – T. 14. – №. 4. – C. 7968-7972.
4. Ergashev U. Y. et al. Treatment of idiopathic thrombocytopenic purpura: prevention of hormonal complications in the stomach and duodenum //Central Asian Journal of Medicine. – 2020. – T. 2020. – №. 2. – C. 5-28.
5. Ergashev U. Y. Ernazarov Kh. I., Zohirov AR, Alzabni ID 2022. Complex Treatment of Experimental Model of Diabetic Foot Syndrome //American Journal of Medicine and Medical



- Sciences. – 2022. – Т. 12. – №. 5. – С. 471-480.
6. Моминов А. Т. и др. Проблемы обезболивания в амбулаторной хирургии //European Journal of Interdisciplinary Research and Development. – 2022. – Т. 10. – С. 81-89.
 7. Mustafakulov G. I. et al. Splenectomy for hairy cell leukemia //Central Asian Journal of Medicine. – 2021. – Т. 2021. – №. 4. – С. 160-167.
 8. Каримов Ш. И., Ахмедов Р. М., Эргашев У. Ю. Поглочительно выделительная функция печени у больных с механической желтухой до и после эндобилиарных вмешательств //Вестник хирургии. – 1992. – Т. 148. – №. 1. – С. 138.
 9. Эргашев У. Ю., Якубов Д. Р., Моминов А. Т. Ўткир пелвиоректал парапроктит бўлган беморни комплекс даволаш (клиник ҳолат) //Development of pedagogical technologies in modern sciences. – 2022. – Т. 1. – №. 2. – С. 63-64.
 10. Ergashev U. Y. et al. The study of diagnostics and prevention of pathophysiological parameters after modern treatment of purulent-necrotic processes in diabetic. – 2022.
 11. Ergashev U. Y. et al. The study of pathomorphological diagnosis of vital organs after modern treatment of diabetic foot syndrome. – 2022.
 12. Ergashev U. Y. et al. Efficiency of Percutaneous Minimally Invasive Technologies in the Treatment of Patients with Obstructive Jaundice //Jundishapur Journal of Microbiology. – 2022. – Т. 15. – №. 2. – С. 645-655.
 13. Эргашев У. Ю. и др. Нарушение целостности стопы у пациентов с сахарным диабетом (обзор литературы) //Journal of new century innovations. – 2022. – Т. 17. – №. 1. – С. 7-18.
 14. Мустафакулов Г. И., Атаходжаева Ф. А., Эргашев У. Ю. Идиопатическая тромбоцитопеническая пурпура при беременности. – 2020.
 15. Арипова Д. Ш. и др. Энтеросорбционные препараты—новый этап в комплексном лечении хронической почечной недостаточности и уремического синдрома //2017 год. – С. 76.
 16. Ergashev U. Y., Zokhirov A. R., Minavarkhujayev R. R. Study and treatment of changes in biochemical processes in complications of diabetes mellitus. – 2023.
 17. Ergashev U. Y., Zokhirov A. R., Minavarkhujayev R. R. The study of pathological physiology of indicators of endogenous intoxication in purulent-necrotic lesions of the lower extremities. – 2023.
 18. Yusufjanovich E. U. et al. Assessment of the Process of Epithelialization After Complex Treatment of Diabetic Foot Syndrome //Texas Journal of Medical Science. – 2023. – Т. 16. – С. 19-23.
 19. Yusufjanovich E. U. et al. Evaluation of biochemical changes in endogenous intoxication in diabetic complications //Conferencea. – 2023. – С. 109-114.
 20. Terashi, H., Izumi, K., Deveci, m., Rhodes, L.M., and Marcelo, C.L. 2005. High glucose inhibits human epidermal keratinocyte proliferation for cellular studies on diabetes mellitus. *Int. Wound J.* 2: 298–304. [medline] [CrossRef].